



# Modules

Catalogue



T +44 (0) 1942 671122 E [sales@plusopto.co.uk](mailto:sales@plusopto.co.uk) W [www.plusopto.co.uk](http://www.plusopto.co.uk)

B13 Derwent Court William Way Moss Industrial Estate Leigh Lancashire WN7 3PT



# About AET

## AET Displays Limited

Established in 2015, AET is a high-tech enterprise under Guangdong Guangda Group Corporation. It is rated as "Guangdong LED Micro display and control engineering technology research center" by the Department of Science and Technology of Guangdong Province.

AET integrates Mini Micro LED design, research and development, production, sales and service together. The headquarter of AET 3000m<sup>2</sup> is located in Songshan lake high-tech industrial development zone in Dongguan, which is a high-tech industrial development zone specializing for companies with cutting-edge technology. AET aims to be the "Innovator of the Micro LED displays", combining semiconductor materials, core chips, light sources, high-density carrier boards, driving IC and image processing together to build an ultra-high-definition LED display ecosystem. In the past seven years, AET has cooperated with more than 30 branches in China and abroad countries such as USA, France, Germany, Australia, Spain, Russia, Turkey, UAE, India, Korea, Singapore, Malaysia etc. Successfully dealt with more than hundreds of contractors, processed over two thousand cases in education, conference room, live event, rental event and many more solutions. Offering OEM to ODM services, AET are now owning more than 122 patents, including 3 invention patents, 89 model patents and 30 appearance design patents within five years.

Since AET was set up, our value is insist on considering the sustainable and productive employees in priority. In-office forty square meters gym facility and thirty square meters reading corner let our people to enjoy a relaxed life and effective work at the same time. Located in Guangdong Guangda Group Corporation Liaobu intelligent valley industrial park, AET's factory area covering 24,000m<sup>2</sup>, has highprecision production workshops, fully automatic assembly and burn-in test production lines. These make the traceability of production data so much easier, meanwhile combine with smart storage to create a fully automatic production and manufacturing factory. AET is the one-stop LED display solution from consultant, project design service, assembling to end customer service. AET is here for your ideal visual experience in LED Displays!

# P SERIES

Indoor Full Color Module

320\*160



High Precision Process



Energy-Saving

3840Hz

High Refresh Rate



Common Cathode Technology



Micron-sized Display











Name	Pixel Pitch	Size	Module Pixel	Scan Rate	Refresh Rate	LED Type	Brightness
<b>P-A</b> Indoor Full Color Common Anode	P1.25	320×160	256×128	32扫	3840HZ	1010Copper Wire	400~800 nits Adjustable
	P1.25	320×160	208×128	64扫	3840HZ	1020Copper Wire	
	P1.53	320×160	208×104	52扫	3840HZ	1212Copper Wire	
	P1.66	320×160	192×96	32扫	3840HZ	1212Copper Wire	
	P1.86	320×160	172×86	43扫	3840HZ	1515Copper Wire	
	P2	320×160	160×80	40扫	3840HZ	1515/1817Copper Wire	
	P2.5	320×160	128×64	64扫	3840HZ	1515/1817Copper Wire	
	P2.5	320×160	128×64	32扫	3840HZ	1515/1817Copper Wire	
	P3	192×192	64×64	32扫	1920HZ	2121Copper Wire	
	P3	192×192	64×64	32扫	3840HZ	2121Copper Wire	
	P3.076	320×160	104×52	26扫	1920HZ	2121Copper Wire	
	P3.076	320×160	104×52	26扫	3840HZ	2121Copper Wire	
	P4	256×256	64×64	32扫	1920HZ	2121Copper Wire	
	P4	320×160	80×40	20扫	1920HZ	2121Copper Wire	
<b>P-C</b> Indoor Full Color Common Cathode	P1.53	320×160	256×104	52扫	3840HZ	1212Copper Wire	
	P1.86	320×160	172×86	43扫	3840HZ	1515Copper Wire	
	P2	320×160	160×80	40扫	3840HZ	1515Copper Wire	
	P2.5	320×160	128×64	64扫	3840HZ	1515Copper Wire	

# Q SERIES

Indoor Full Color Module

320\*180

-  16:9 Aspect Ratio
-  Alloy Steel Back Panel
-  High Precision Process
-  DCI-P3 Cinematic Color
-  3840Hz High Refresh Rate
-  Energy-Saving
-  Micron-sized Display
-  Common Cathode Technology



Name	Pixel Pitch	Size	Module Pixel	Scan Rate	Refresh Rate	LED Type	Brightness
<b>Q-A</b> Indoor Full Color Common Anode	P1.25	320×180	256×144	64	3840HZ	1020Copper Wire	400~800 nits Adjustable
	P1.53	320×180	208×117	59	3840HZ	1212Copper Wire	
	P1.66	320×180	192×108	54	3840HZ	1212Copper Wire	
	P1.86	320×180	172×96	48	3840HZ	1515Copper Wire	
	P2	320×180	160×90	45	3840HZ	1515/1817Copper Wire	
	P2.5	320×180	128×72	64	3840HZ	1515/1817Copper Wire	
	P3.076	320×180	104×58	13	3840HZ	2121Copper Wire	
	P4	320×180	80×45	10	3840HZ	2121Copper Wire	
<b>Q-C</b> Indoor Full Color Common Cathode	P1.25	320×180	256×144	64	3840HZ	1010Copper Wire	
	P1.53	320×180	208×117	59	3840HZ	1212Copper Wire	
	P1.86	320×180	172×96	48	3840HZ	1515Copper Wire	



# O SERIES

Outdoor SMD

320\*160



High Precision Process



Energy-Saving

3840Hz

High Refresh Rate



Common Cathode Technology



IP65



Name	Pixel Pitch	Size	Module Pixel	Scan Rate	Refresh Rate	LED Type	Brightness
<b>O Series</b> Outdoor SMD	P2.5	320×160	128×64	16	1920HZ	1415Copper Wire	4500~5000 nits Adjustable
	P2.5	320×160	128×64	16	3840HZ	1415Copper Wire	
	P3.076	320×160	104×52	13	1920HZ	1515Copper Wire	
	P3.076	320×160	104×52	13	3840HZ	1515Copper Wire	
	P4	320×160	80×40	10	1920HZ	1921Copper Wire	
	P4	320×160	80×40	10	3840HZ	1921Copper Wire	
	P5	320×160	64×32	8	1920HZ	1921Copper Wire	
	P5	320×160	64×32	8	3840HZ	1921Copper Wire	
	P6.66	320×160	48×24	6	1920HZ	2525Copper Wire	
	P6.66	320×160	48×24	6	3840HZ	2525Copper Wire	
	P6	192×192	32×32	8	1920HZ	2525Copper Wire	
	P6	192×192	32×32	8	3840HZ	2525Copper Wire	
	P8	320×160	40×20	5	1920HZ	2525Copper Wire	
	P8	320×160	40×20	5	3840HZ	2525Copper Wire	
	P8	256×128	32×16	4	1920HZ	2525Copper Wire	
	P10	320×160	32×16	2	1920HZ	3535Copper Wire	
P10	320×160	32×16	2	3840HZ	3535Copper Wire		

# Smart Display Platform of AET

- Standardized products, with 3C, CE, UL, ETL and other relevant domestic and international standards.
- Ideal for fixed installation projects; die-casting aluminum cabinet; front maintenance.
- Convenient installation, integrated cable system: Power cable and flat cable are connected with the module.
- 18bit + Grayscale enhancement technology, supports 3D display and brightness correction.
- Easy after-sales with spare parts, warehouse, replacement upon arrival.



640x480



640x640



640x360



640x720



960x960

	DH12	DH15	DH18	DH20	DH25
Cabinet Size	Module Size		Module Quantity		
640 × 360	320x180		6		
640 × 480	320x160		6		
640 × 640	320x160		8		
640 × 720	320x180		8		
960 × 960	320x160		18		

## Variety of accessories for easy DIY installtion

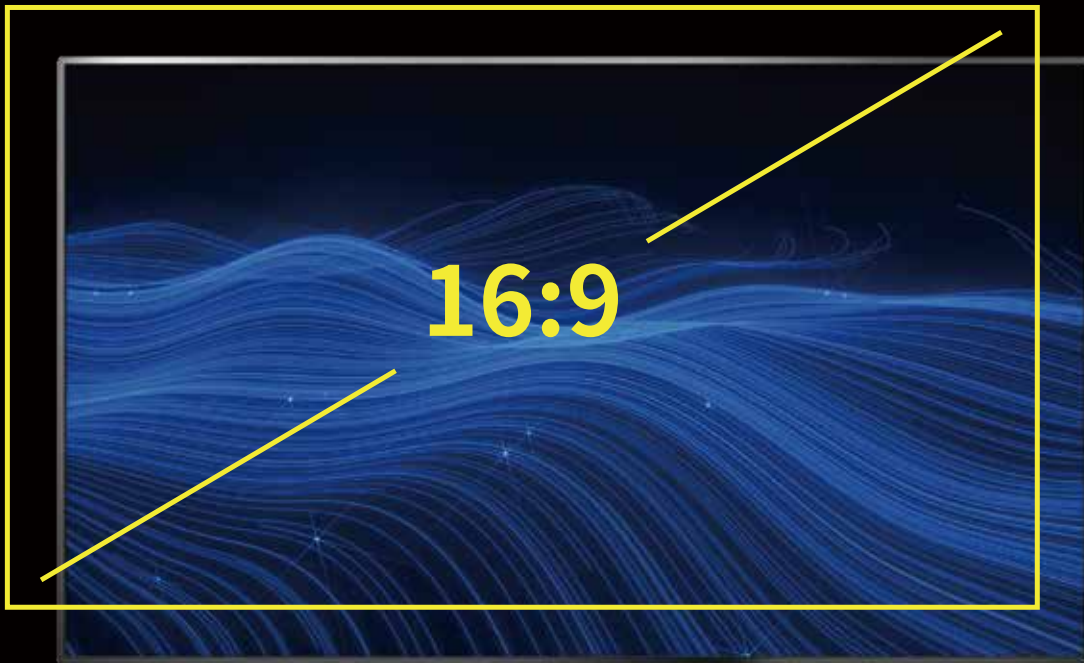
Highly integrated LED screen accessories for easy matching at affordable price.

### Accessories

	Name	Model		Specification
Control System	Receiving Card	AET-G12	G612	12 Ports Receivi Card
		AET-G16	G612	16 Ports Receivi Card
	Sending Card	AET-L2	S2	2 Network Ports Sending Card
		AET-L4	S4	4 Network Ports Sending Card
		AET-L16	S16	16 Network Ports Sending Card
	Integrated Processor	AET-LSV2	SV2	2 Network Ports
		AET-LSV4	SV4	4 Network Ports
		AET-LSV6	SV6	6 Network Ports
		AET-LSV8	SV8	8 Network Ports
		AET-LSV16	SV16	16 Network Ports
Single/ Dual Color Module	Outdoor DIP Single Color	P10 Red		
	Outdoor SMD Single Color	P10 Red		
	Indoor SMD Single Color	3.75 Red		
	Indoor SMD Single Color	3.75 RG		
Power Supply	AET Power Supply	AET200-4.5V		
		200-4.5/5V		

## Ideal cabinet sizes to achieve 16:9 aspect ratio

Supports 16:9 aspect ratio, matching with mainstream video ratio of HD display, easy splicing.



### Seamless Splicing with Aluminum Cabinet

Aluminum ultra-thin cabinet, seamless splicing, screen flatness less than 0.1mm, deformity resistance; Full front maintenance for lower cost.



### High Refresh Rate, Low Greyscale, High Pixel Density

- Dynamic image effect enabled by high refresh rate;
- No color deviation, no blurred image with low greyscale;
- Multiple pixel pitches choice for better clarity.



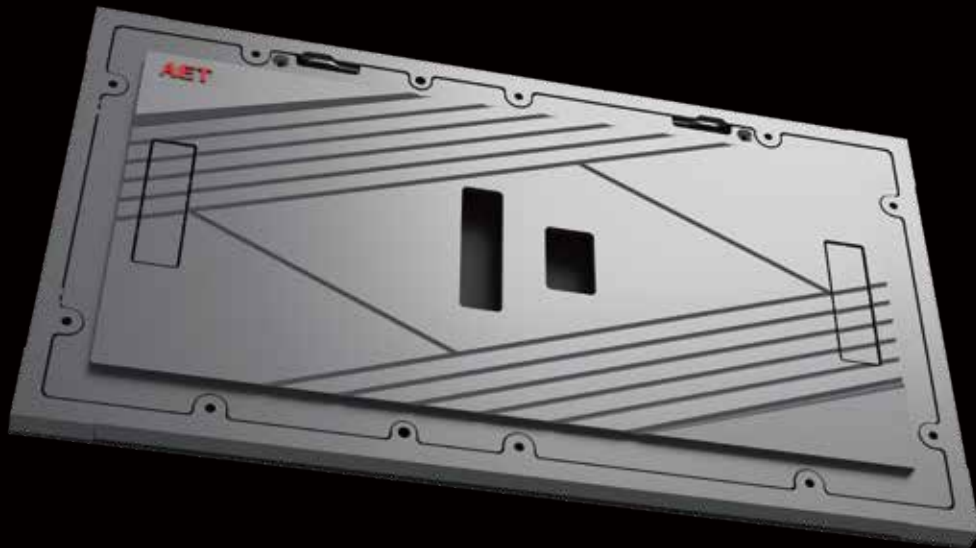
## Patented Packaging Technology

AET's channel modules with QCOB packaging create a flat surface viewing, Auto-adjustment for the color tone to image restoring, Limination of Moire patter. Self-adaptive to the external environment. High protection level, better flatness than the COB products.

\*QCOB (Quantum COB), AET's patented packaging technology.

## Compatible sizes for easy installation

Compatible sizes: 320x180mm/320x160mm, highly integrated cabinet, easy installation, multiple splicing methods. Much more easy update.



## Energy-saving with unique technologies

Supports Common Cathode \* drive for energy-saving and low power consumption; Excellent thermal conductivity of both BOB packaging and the aluminum cabinet ensure better heat dissipation.



## Selected quality materials, slot-designed interface

- Stable and better display effect is enabled by quality LED beads and IC.
- Contact impedance is reduced by Gold Plated pin arrangement.
- Slot-designed interface to avoid false plugging.
- Common Cathode: RGB chip shared one cathode while the beads are driven by the anode.



# Applications

Major LED display supplier for CCTV



2021 CCTV's Spring Festival Gala



2022 CCTV's Spring Festival Gala



2022 CCTV's Chinese Opera Gala



2022 Beijing Winter Olympic Games TV studio





Command Rooms



Control Rooms



Conference Rooms



Multi-function Hall



Outdoor Project (Office Building)



Outdoor Project (Plaza)



Outdoor Project (Shopping Center)



Outdoor Project (Commercial Signage)